



 **FOCCO**  
BATHROOM LIGHTING

2019



## Focco, the perfect partner

This is a trademark owned by EBIR, a company with 25 years' experience in manufacturing bathroom lighting and a reference in the industrial sector, as reflected in a prestigious portfolio of clients.

Available worldwide in Sanitary Shops and DIY's, FOCCO is designed for people who pay special attention to functionality and appreciate aesthetic value.



Choose yours :)







# BENCHMARK BRAND

Occupies the leading position in Europe in bathroom lighting manufacturing.

**25+ years**  
of experience

**100%**  
of certified product

**Security** of a rigorous  
production control.

**Service and support**  
to our customers.

**UX (User  
Experience)**

**In-house Product  
Design Lab**

**Delivery term  
commitment**

**Attractive  
communication**

**Training  
programme**

Choose yours :)



# DISCOVER WHY THE LIGHTING OF YOUR MIRROR IS IMPORTANT



HIGH LUMINOSITY  
WITH FOCCO



WITH OTHERS

*Choose yours :)*



## When putting on make-up or shaving

- Get a **better view of details**
- **See the natural tone** of your skin



## As part of your day-to-day routine

- **Uniform light**, without shadows
- A light that's gentle **on the eyes**



## To let you **relax**

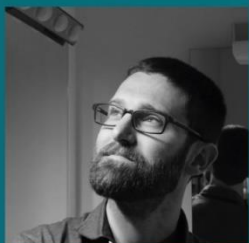
- Proper lighting helps to  
create an **intimate  
atmosphere that encourages  
relaxation**







José  
Rueda



Rubén  
Soler



Sergio  
Agut



Paula  
Botella

# DESIGN LAB

Our in-house Design Team works to create products that incorporate the latest technological and aesthetic innovations at our customers' service.

After years of studying light and its use, we design products that provide users with the ideal intensity and quantity of light for their tasks in front of the mirror.



METROPOLIS MAGAZINE  
LIKE'S AWARD



## SALES ARGUMENTS TRAINING PROGRAMME

**FOCCO TRAINING** is a programme implemented to make more **specialised** professionals at the point of sale.



### OBJECTIVES

- ✓ To provide **technical knowledge** and sales arguments.
- ✓ To **guide the customer** to the product best meets their requirements.
- ✓ To increase **customer satisfaction**.
- ✓ To **improve the experience** at the point of sale.
- ✓ To **increase sales**.

### CONTENT

- ✓ **Training session** given by one of our product specialists.
- ✓ **Training guide** delivered.
- ✓ **Dedicated telephone care** to settle any doubts on the product.
- ✓ **Online content** always available.
- ✓ **Constant update** of the content regarding new products and technologies.

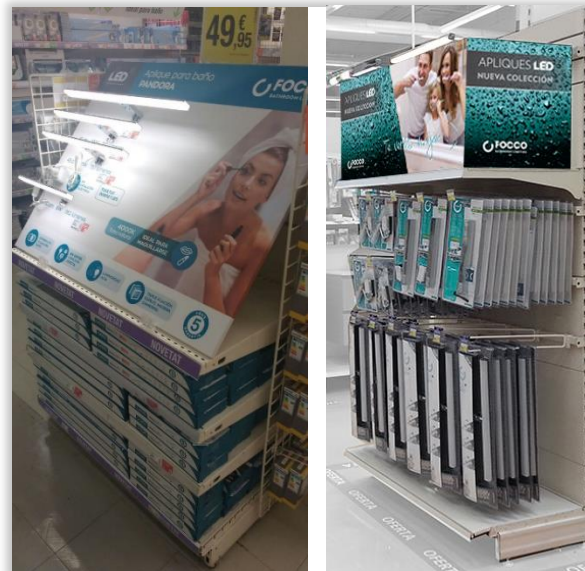
## INCREASE YOUR SALES THROUGH VISUAL AND ATTRACTIVE COMMUNICATION

On our store-based communication not only do we highlight the technical aspects of our products, but go much further with our branding, introducing elements that appeal to the consumers' **emotions** and associating our brand with values that are much more solid and resonate with the user.

Display



Point of sale  
advertising



Attractive  
packaging





## PROMOTIONAL SUPPORT HELPING THE SELLER

In house  
training



Visit our  
website



Instruction  
videos on our  
Youtube channel

ECO FRIENDLY PACKAGING  
PROGRAM, WE ARE REDUCING  
THE USE OF PLASTICS



POS  
decoration  
support





# MIRRORS

WITH INTEGRATED  
LIGHTING SYSTEMS







# ILLUMINATED MIRRORS VALUES

## Innovation = 0 problems

Patented, latest generation  
lighting systems that provide:

+ **LIGHT**  
+ **SAVING**  
+ **DURABILITY**

APPLIED IN  
3 LIGHTING  
SYSTEMS

SCREEN  
LINER  
REGLETTE

## High Quality

- ✓ Lighting systems that ensure the functional reliability of the mirrors.
- ✓ We reduce returns.
- ✓ We reduce consumption of electricity while increasing functionality.
- ✓ Own Manufacturing and Quality Controls.

## Maximum Functionality

- + QUALITY OF LIGHT
- + QUANTITY OF LIGHT
- + UNIFORMITY OF LIGHT

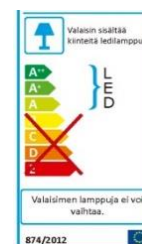


Others

## Competitive

- ✓ We make products with **SUPERIOR MANUFACTURING VALUES** affordable for users.
- ✓ **MAXIMUM SAVINGS** for users.

## LED



## Maximum Safety

- Safe in spaces with high humidity.
- 100% TESTED PRODUCT.
- EASY AND SAFE INSTALLATION.



## Warranty

- Tested for **SALT SPRAY**.
- Long Durability: **36,000 h.**
- Glass with **ANTICORROSION** treatment.
- **TRANSPORT SHOCK** testing.
- **EASY TO HANDLE** packaging .

**5-YEARS  
GUARANTEE**



# MUCH MORE! than just mirrors

In Focco not only do we fit the best lighting to our products, we also integrate functions and add values that improve the user experience and the quality of their day-to-day activities.



Defogger function  
guarantee perfect  
visibility



With  
defogger

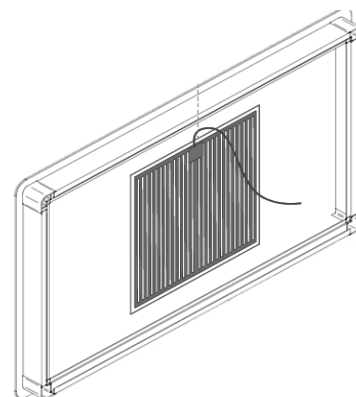


Without  
defogger



Anti-corrosion  
protection avoid  
the glass oxidation

Mirror without anti-corrosion  
protection with oxidated edges



Defogger System fitted on  
the back of the mirror.





## Touch sensor

To easily control lighting and defogger function directly from the mirror.



## Charge your devices in the mirror

Useful USB ports integrated in the side of the mirror will allow you to charge your devices while you get ready.



**Watch video at  
our YouTube Channel**



# LED LIGHTING OPTIMIZATION

**Patented,**  
Latest Generation  
Lighting Systems

## SCREEN TECHNOLOGY

### ZERO COMPLAINTS

Integrates a rigid LED module which is protected by the diffuser.

The heat from the LED is efficiently dissipated, guaranteeing a long LED life.

**90%  
+ LIGHT** **50%  
+ SAVINGS**

THAN THE TRADITIONAL  
LED STRIP



### SUPERIOR TECHNOLOGY

Maximum luminosity.  
High visual comfort.  
Uniform light.

## LINER TECHNOLOGY

**25%+ LIGHT**  
THAN THE  
TRADITIONAL  
LED STRIP

LED points not visible.

Uniform light.

Reflectors to boost  
luminosity.

### ZERO COMPLAINTS

Multiple anchoring  
points prevent the LED  
strip from coming off.

Rounded corners  
guarantee that the LEDs  
will not break.

## REGLETTE TECHNOLOGY

**x2**

+ LUMINOSITY  
AT PRECISION POINT

With less energy  
consumption



## ZERO COMPLAINTS

Incorporate an  
AC-LED module  
tested for durability.

## FUNCTIONALITY AND ADVANTAGES

Blur the LED light dots.  
External LED driver  
not required.

**5** YEARS

## GUARANTEE

UV Test ->No crack,  
non yellowing.

100.000 on/off cycles  
Test.

Thermal shrinkage Test.

Thermal Management  
Test.

NEW  
ARRIVAL

# MIA

Illuminated mirror

- It provides optimum lighting on the mirror.
- 2 installation options.
- Corrosion protection treatment that avoid glass oxidation.
- Homogeneous light.
- No visible LED dots.
- Longer life in perfect conditions.
- ON/OFF Touch switch
- Eco-friendly Security packaging:
  - Handle for easy transport.
  - Fall and impact tested.
  - EPS has been replaced by paperboard.

600x800 mm | **30 W**

700x800 mm | **30 W**

800x800 mm | **30 W**

1000x800 mm | **40 W**

1200x800 mm | **40 W**

2  
POSITIONS



**WHITE LIGHT**  
5700 K





#### LIGHT SOURCE

Led strip

#### CRI

≥ 80 Ra

#### MATERIALS

- Body: PVC + aluminium
- Mirror: 4 mm

#### RATED VOLTAGE

220- 240V ~ 50/60Hz

#### ENVIRONMENTAL IMPACT

Low

#### INSULATION

II

#### 2 POSITIONS



#### INTEGRATED LED



#### ANTICORROSIVE PROTECTION



#### TOUCH SWITCH



#### ILLUMINANCE



#### ECO FRIENDLY PACKAGING WE REDUCE THE USE OF PLASTICS

- Safe packaging and provided with handles for easy transportation
- Proof of falls and impacts during handling.
- The EPS has been replaced by recyclable cardboard.





NEW  
ARRIVAL

Enhance any  
space with  
**WALL  
GLOW LIGHT**

# COLETTE

Illuminated mirror

- Attractive geometric design.
- Homogeneous light.
- Corrosion protection treatment to avoid glass oxidation.
- Defogger system to guarantee perfect visibility without steam
- ON/OFF + Defogger Integrated Touch switch
- Safety packaging:
  - Handle for easy transport.
  - Fall and impact tested.

750 mm  | 12 W + 15 W defogger | 898 lm



**NATURAL LIGHT**

4000 K





#### LIGHT SOURCE

Led strip

#### CRI

≥ 80 Ra

#### MATERIALS

- Frame: White iron
- Mirror: 4 mm

#### RATED VOLTAGE

220- 240V ~ 50/60Hz

#### ENVIRONMENTAL IMPACT

Low

#### INSULATION

II



#### DEFOGGER



#### INTEGRATED LED



#### ANTICORROSIVE PROTECTION



#### TOUCH SWITCH



#### ILLUMINANCE



Medium



Medium



NEW  
ARRIVAL

# UMA

Illuminated mirror

- Attractive round design.
- Homogeneous light.
- Corrosion protection treatment to avoid glass oxidation.
- Defogger system to guarantee perfect visibility without steam
- Safety packaging:
  - Handle for easy transport.
  - Fall and impact tested.

750 mm  $\varnothing$  | 20 W + 21 W defogger | 1450 lm

 **WHITE LIGHT**  
5700 K







#### LIGHT SOURCE

Led strip

#### CRI

≥ 80 Ra

#### MATERIALS

- Frame: White iron
- Mirror: 4 mm

#### RATED VOLTAGE

220- 240V ~ 50/60Hz

#### INSULATION

II

#### ENVIRONMENTAL IMPACT

Low

#### DEFOGGER



#### INTEGRATED LED



#### ANTICORROSIVE PROTECTION



#### AMBIENT LIGHT



#### ILLUMINANCE



Medium



Medium



Enhance any  
space with  
**WALL GLOW  
LIGHT**



UMA

Illuminated mirror



# SAM

Illuminated mirror

- It provides HIGH luminosity and NO glare.
- Homogeneous light.
- Corrosion protection treatment that avoid glass oxidation.
- Longer life in perfect conditions.
- Safety packaging:
  - Handle for easy transport.
  - Fall and impact tested.

600 x 800 mm | **20 W**

800 x 800 mm | **20 W**

1000 x 800 mm | **20 W**

1200 x 800 mm | **20 W**



**WHITE LIGHT**  
5700 K





**LIGHT SOURCE**  
AC-LED

**CRI**  
≥ 80 Ra

**LIGHTING SYSTEM**  
Reglette

**RATED VOLTAGE**  
220- 240V ~ 50/60Hz

**MATERIALS**  
Mirror: 4 mm

**INSULATION**  
II

**ENVIRONMENTAL IMPACT**  
Low

INTEGRATED  
LED



ANTICORROSIVE  
PROTECTION



**ILLUMINANCE**



**SAM**  
Illuminated mirror



# EDEL

Illuminated mirror

- It provides HIGH luminosity and NO glare.
- Homogeneous light.
- Corrosion protection treatment that avoid glass oxidation.
- Longer life in perfect conditions.
- Safety packaging:
  - Handle for easy transport.
  - Fall and impact tested.

600 x 700 mm | **6 W** | 430 lm

800 x 700 mm | **10 W** | 745 lm

1000 x 700 mm | **12 W** | 730 lm

1200 x 700 mm | **12 W** | 730 lm



**WHITE LIGHT**  
5700 K







#### LIGHT SOURCE

AC-LED

#### LIGHTING SYSTEM

Reglette

#### MATERIALS

- Profile: Anodized aluminium
- Mirror: 4 mm

#### ENVIRONMENTAL IMPACT

Low

#### CRI

≥ 80 Ra

#### RATED VOLTAGE

220- 240V ~ 50/60Hz

#### INSULATION

II

INTEGRATED LED



ANTICORROSIVE PROTECTION



#### ILLUMINANCE



High



High



# EMMA

Illuminated mirror

- It provides HIGH luminosity and NO glare.
- 2 hanging positions.
- Homogeneous light.
- Corrosion protection treatment that avoid glass oxidation.
- No visible LED dots.
- Longer life in perfect conditions.
- Safety packaging:
  - Handle for easy transport.
  - Fall and impact tested.

800 x 600 mm | **12 W**

800 x 700 mm | **12 W**

800 x 800 mm | **12 W**

1000 x 700 mm | **12 W**

 **WHITE LIGHT**  
5700 K





#### LIGHT SOURCE

LED

#### LIGHTING SYSTEM

Screen

#### MATERIALS

Mirror: 4 mm

#### ENVIRONMENTAL

IMPACT

Low

#### CRI

≥ 80 Ra

#### RATED VOLTAGE

220- 240V ~ 50/60Hz

#### INSULATION

II

2 POSITIONS



INTEGRATED  
LED



ANTICORROSIVE  
PROTECTION



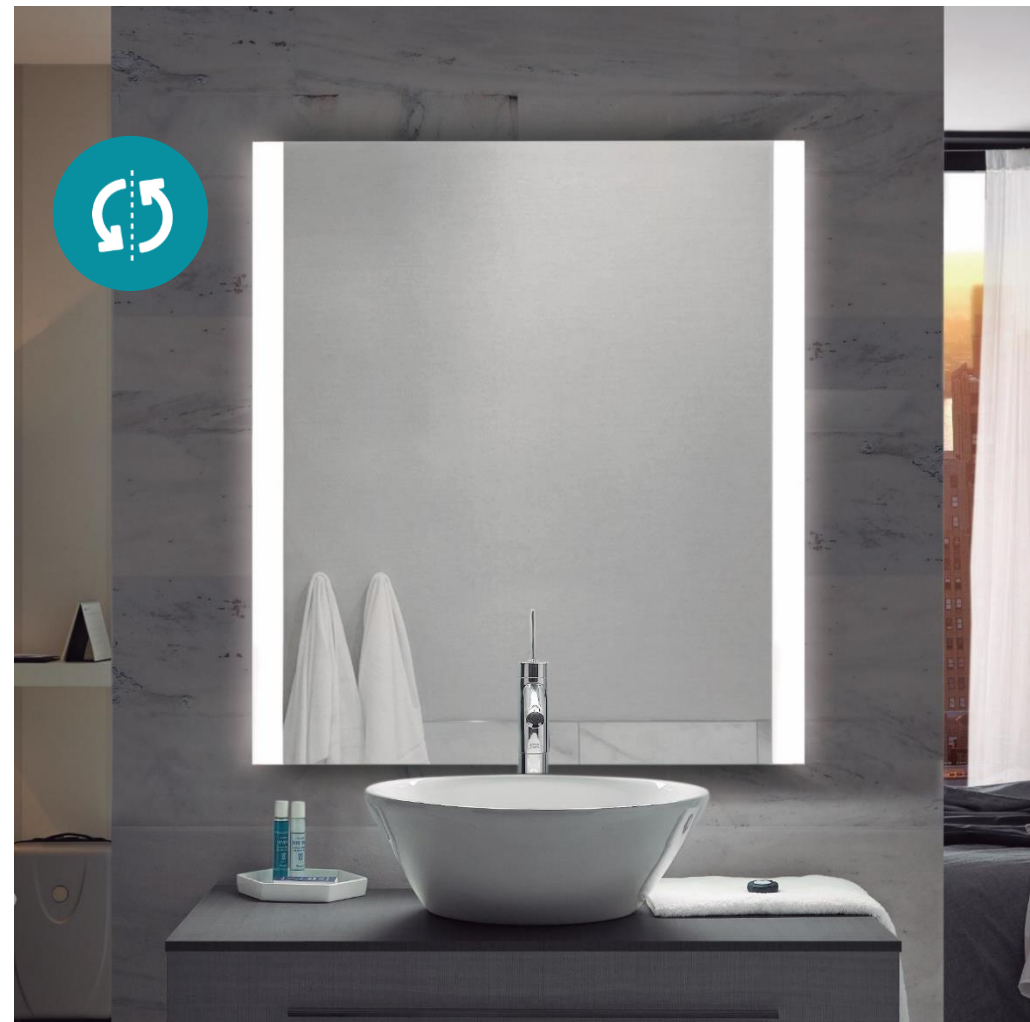
#### ILLUMINANCE



High



High



**EMMA**

Illuminated mirror





# ADA

Illuminated mirror

- It provides optimum lighting on the mirror.
- 2 hanging positions.
- Homogeneous light.
- Corrosion protection treatment that avoid glass oxidation.
- Defogger system that guarantee perfect visibility without steam.
- No visible LED dots.
- Longer life in perfect conditions.
- Safety packaging:
  - Handle for easy transport.
  - Fall and impact tested.

800 x 700 mm | **30 W** + 21 W defogger | 744 lm

800 x 800 mm | **30 W** + 21 W defogger | 744 lm

1000 x 700 mm | **30 W** + 32 W defogger | 867 lm

1200 x 700 mm | **50 W** + 32 W defogger | 1105 lm



**WHITE LIGHT**  
5700 K





#### LIGHT SOURCE

LED strip

#### LIGHT SYSTEM

Liner

#### MATERIALS

- Body: PVC + ABS
- Mirror: 4 mm

#### ENVIRONMENTAL

##### IMPACT

Low

##### CRI

≥ 80 Ra

#### RATED VOLTAGE

220- 240V ~ 50/60Hz

#### INSULATION

II

#### 2 POSITIONS



#### DEFOGGER



#### INTEGRATED LED



#### ANTICORROSIVE PROTECTION



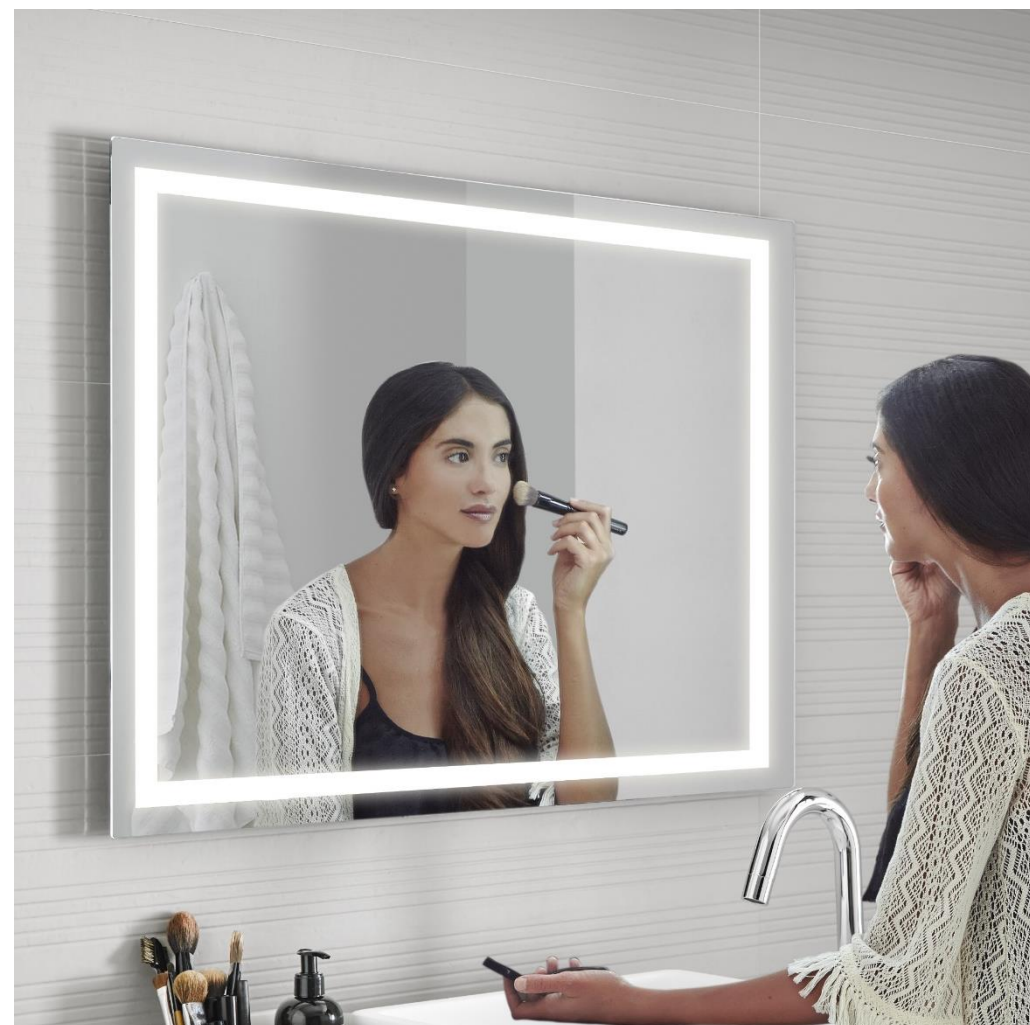
#### ILLUMINANCE



High



Medium



ADA

illuminated mirror

# LINA

Illuminated mirror

- It provides HIGH luminosity and NO glare.
- Corrosion protection treatment that avoid glass oxidation.
- Includes defogger system that guarantee perfect visibility without steam.
- 2 USB chargers.
- On/Off and defogger individual touch switch.
- Mobile phone support included.
- No visible LED dots.
- Safety packaging:
  - Handle for easy transport.
  - Fall and impact tested.

600 x 800 mm | **10 W** + 38 W defogger | 357 lm

800 x 700 mm | **10 W** + 38 W defogger | 657 lm

 **WHITE LIGHT**  
5700 K



2 useful USB ports  
integrated in the side of the  
mirror will allow you to  
charge your devices by the  
time you get ready.



#### LIGHT SOURCE

AC-LED

#### CRI

≥ 80 Ra

#### LIGHT SYSTEM

Reglette

#### RATED VOLTAGE

220- 240V ~ 50/60Hz

#### ENVIRONMENTAL IMPACT

Low

#### INSULATION

II

#### 2 USB



#### MOBILE SUPPORT



#### DEFOGGER



#### INTEGRATED LED



#### ANTICORROSIVE PROTECTION



#### TOUCH SWITCH



#### ILLUMINANCE







# DALMA

Illuminated mirror

- Pure lines for an elegant mirror that fits perfectly in any space.
- Corrosion protection treatment that avoid glass oxidation.

600 x 800 mm | **20 W** | 850 lm

800 x 800 mm | **20 W** | 950 lm

1000 x 800 mm | **20W** | 1070 lm

1200 x 800 mm | **20 W** | 1180 lm



**WHITE LIGHT**  
5700 K







#### LIGHT SOURCE

LED STRIP

#### LIGHTING SYSTEM

Led Strip on PVC profile

#### MATERIALS

Mirror: 4 mm

#### ENVIRONMENTAL

##### IMPACT

Low

##### CRI

≥ 80 Ra

##### RATED VOLTAGE

220- 240V ~ 50/60Hz

##### INSULATION

II

##### AMBIENT LIGHT



##### INTEGRATED LED



##### ANTICORROSIVE PROTECTION



#### ILLUMINANCE



Medium



Medium





LUMI

NAIRES



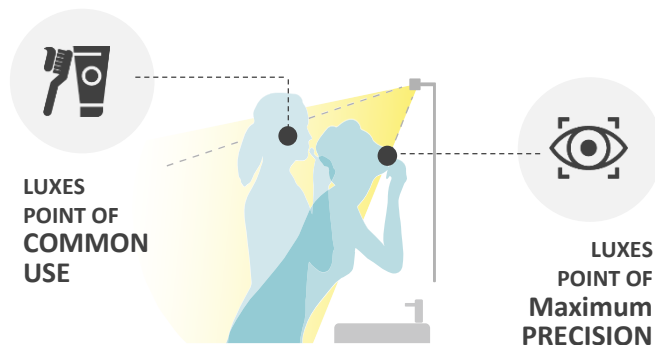




# LUMINAIRES VALUES

## Maximum Functionality

All our products are designed to meet the user's lighting needs in front of the mirror.



## Wide Range

A wide range of designs and dimensions of our products, which makes it easier to fit them in with the furnishings in style and size.



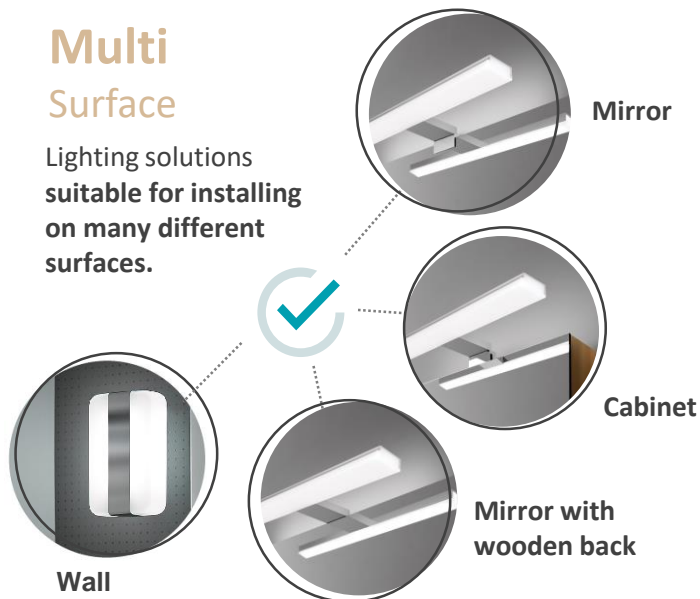
## Easy Installation

Simple steps for anyone to be able to perform with the aid of our installation sheet.



## Multi Surface

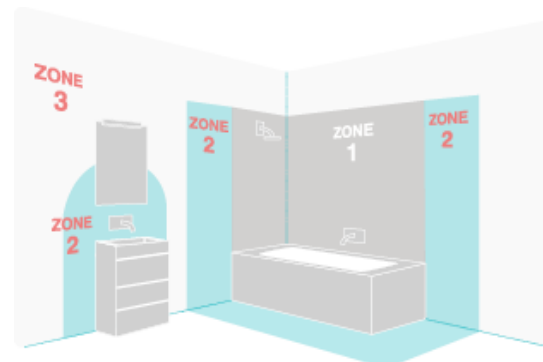
Lighting solutions suitable for installing on many different surfaces.



## Maximum Safety



Indicates that light fittings can safely be installed in zones 2 and 3



## Minimum Consumption Maximum Savings

**FOCCO** BELA



As lâmpadas não podem ser substituídas

874/2012



*Less means more*

- Responsible consumption
- Savings in your light bill
- Better light quality

# IRENE

Bathroom Light

- Optimum lighting quality in the mirror.
- **Alternating Current LED** technology.
- NO External driver.
- NO LED spares.

300 mm | **7 W** | 669 lm

500 mm | **9 W** | 865 lm

800 mm | **10 W** | 946 lm



**WHITE LIGHT**  
5700 K





#### INSTALLATION SURFACES

- Cabinet
- Wooden frame
- Mirror

#### MATERIALS

- Body: ABS
- Diffuser: PC

#### DECORATION

Chrome

#### CRI

≥ 80 Ra

#### RATED VOLTAGE

220- 240V ~ 50/60Hz

#### INSULATION

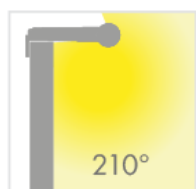
II

#### ENVIRONMENTAL

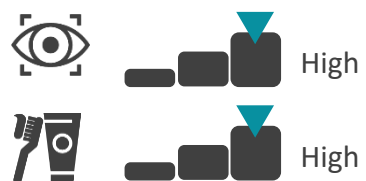
#### IMPACT

Low

#### LIGHT BEAM



#### ILLUMINANCE



# IRENE WALL

Bathroom Light

- Multiple mounting options
- Optimum lighting quality in the mirror.
- **Alternating Current LED** technology.
- NO External driver.
- NO LED spares.

500 mm | **9 W** | 865 lm



**WHITE LIGHT**  
5700 K







**IRENE WALL**  
Bathroom Light

#### INSTALLATION SURFACES

Wall

#### MATERIALS

Body: ABS  
Diffuser: PC

#### DECORATION

Chrome

#### CRI

≥ 80 Ra

#### RATED VOLTAGE

220- 240V ~ 50/60Hz

#### INSULATION

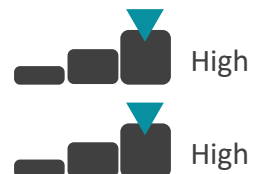
II

#### ENVIRONMENTAL IMPACT

Low



#### ILLUMINANCE





# PANDORA BLACK

Bathroom Light

- Black matt decoration
- Optimum lighting quality in the mirror.
- **Alternating Current LED** technology.
- NO External driver.
- NO LED spares.

308 mm | **8 W** | 562 lm

458 mm | **10 W** | 757 lm



**WHITE LIGHT**  
5700 K





#### INSTALLATION SURFACES

- Cabinet
- Wooden frame
- Mirror

#### MATERIALS

- Body: Aluminium, ABS
- Diffuser: PC

#### DECORATION

Black

#### CRI

≥ 80 Ra

#### RATED VOLTAGE

220- 240V ~ 50/60Hz

#### INSULATION

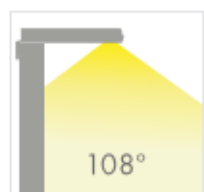
II

#### ENVIRONMENTAL

IMPACT

Low

#### LIGHT BEAM



#### ILLUMINANCE





# PANDORA

Bathroom Light

- Combines a sleek design with materials and next-generation technology.
- **Wide range of sizes**
- Optimum lighting quality in the mirror.
- **Alternating Current LED** technology.
- NO External driver.
- NO LED spares.

308 mm | **8 W** | 562 lm

458 mm | **10 W** | 757 lm

608 mm | **12 W** | 955 lm

808 mm | **15 W** | 1270 lm



**NATURAL LIGHT**

4000 K



**WHITE LIGHT**

5700 K







#### INSTALLATION SURFACES

- Cabinet
- Wooden frame
- Mirror

#### MATERIALS

- Body: Aluminium, ABS
- Diffuser: PC

#### DECORATION

Chrome

#### CRI

≥ 80 Ra

#### RATED VOLTAGE

220- 240V ~ 50/60Hz

#### INSULATION

II

#### ENVIRONMENTAL IMPACT

Low

#### LIGHT BEAM



#### ILLUMINANCE





**PLUG  
& PLAY**

# PANDORA PLUG & PLAY

Bathroom Light

- Ready to plug.
- Electrical installation not required.
- Optimum lighting quality in the mirror.
- **Alternating Current LED** technology.
- NO External driver.
- NO LED spares.

458 mm | **10 W** | 757 lm



**NATURAL LIGHT**  
4000 K





#### INSTALLATION SURFACES

- Cabinet
- Wooden frame
- Mirror

#### MATERIALS

- Body: Aluminium, ABS
- Diffuser: PC

#### DECORATION

Chrome

**CRI**  
≥ 80 Ra

**RATED VOLTAGE**  
220- 240V ~ 50/60Hz

**INSULATION**  
II

#### ENVIRONMENTAL IMPACT

Low

#### LIGHT BEAM



#### ILLUMINANCE



# VERONICA

Bathroom Light

- Optimum lighting quality in the mirror.
- **Alternating Current LED** technology.
- NO External driver.
- NO LED spares.

300 mm | **8 W** | 525 lm



**WHITE LIGHT**  
5700 K







VERONICA  
Bathroom Light

TREND  
COLOR

#### INSTALLATION SURFACES

- Cabinet
- Wooden frame
- Mirror

#### MATERIALS

- Body: ABS
- Diffuser: PC

#### DECORATION

Chrome / Black

#### CRI

≥ 80 Ra

#### RATED VOLTAGE

220- 240V ~ 50/60Hz

#### INSULATION

II

#### ENVIRONMENTAL IMPACT

Low

#### LIGHT BEAM



#### ILLUMINANCE





# HOLLYWOOD

Bathroom Light

- Multiple mounting options.
- **Excellent** lighting quality in the mirror.
- **Alternating Current LED** technology.
- NO External driver.
- NO LED spares.

600 mm | **10 W** | 1113 lm

850 mm | **14 W** | 1557 lm



**WHITE LIGHT**  
5700 K





#### INSTALLATION SURFACES

- Cabinet
- Wooden frame
- Mirror
- Wall

#### CRI

≥ 80 Ra

#### RATED VOLTAGE

220- 240V ~ 50/60Hz

#### MATERIALS

- Body: PC, PVC
- Diffuser: PC

#### INSULATION

II

#### DECORATION

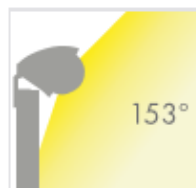
Black, Chrome

#### ENVIRONMENTAL

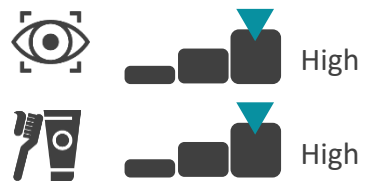
#### IMPACT

Low

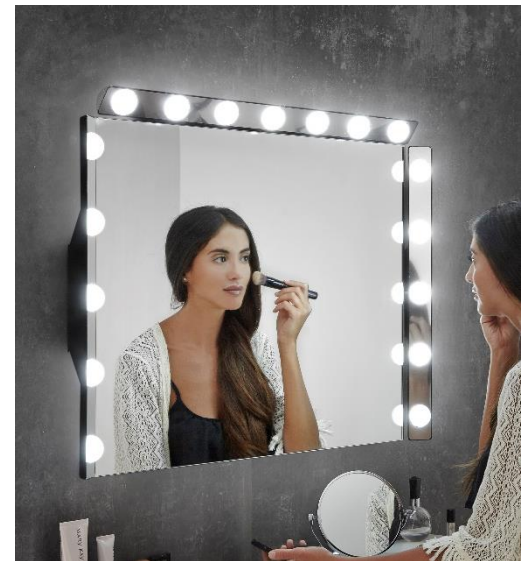
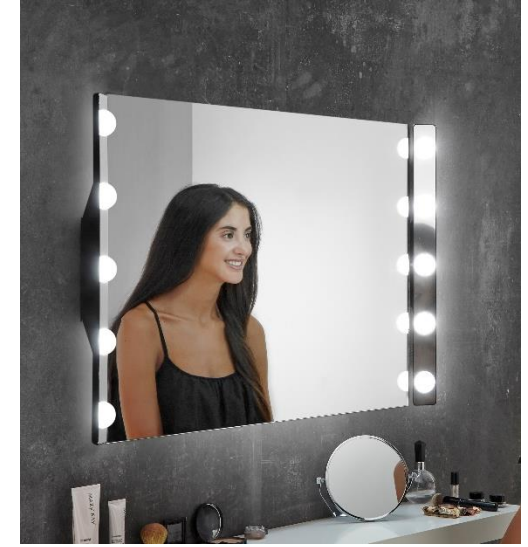
#### LIGHT BEAM



#### ILLUMINANCE



special for  
precision  
tasks







# BELA

Bathroom Light

- Optimum lighting quality in the mirror.
- **Alternating Current LED** technology.
- NO External driver.
- NO LED spares.
- Offering a wide range of installation-surface solutions.

200X134 mm | **10 W** | 655 lm



**WHITE LIGHT**  
5700 K







#### INSTALLATION SURFACES

- Wooden frame
- Mirror
- Wall

#### MATERIALS

- Body: Aluminum
- Diffuser: PMMA

#### DECORATION

Chrome

#### CRI

≥ 80 Ra

#### RATED VOLTAGE

220- 240V ~ 50/60Hz

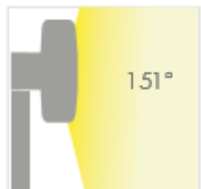
#### INSULATION

II

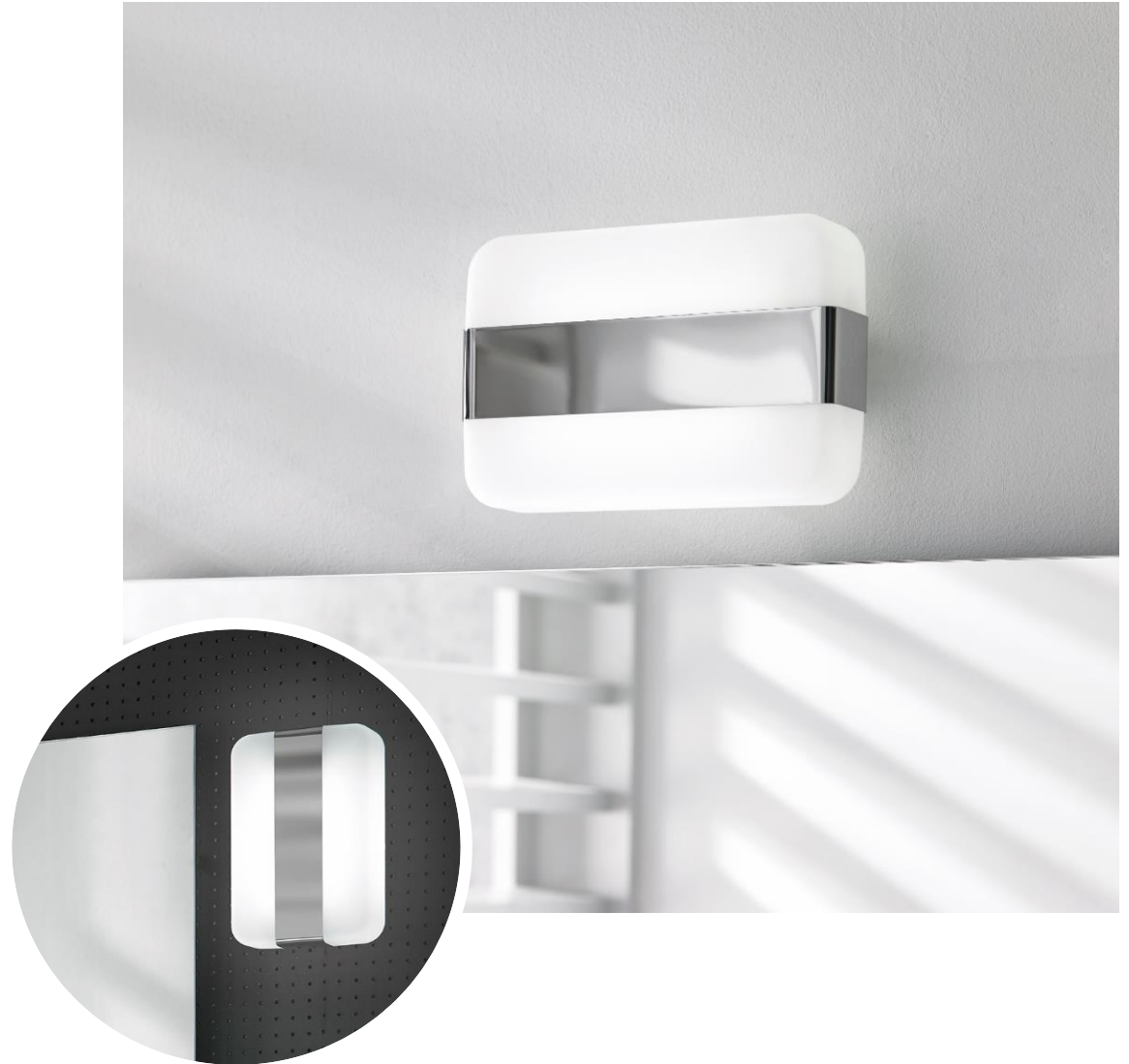
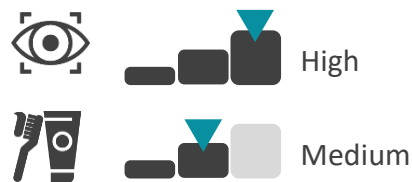
#### ENVIRONMENTAL IMPACT

Low

#### LIGHT BEAM



#### ILLUMINANCE



# NIKITA

Bathroom Light

- Wide range of colours available
- Multiple mounting options
- Optimum lighting quality in the mirror.
- **Alternating Current LED** technology.
- NO External driver.
- NO LED spares.

300 mm | **10 W** | 713 lm



**WHITE LIGHT**  
5700 K



Combine  
your  
bathroom in  
aquamarine





Rose gold,  
trend Color



#### INSTALLATION SURFACES

- Cabinet
- Wooden frame
- Mirror

#### MATERIALS

- Body: PC, Stainless Steel /PVC
- Diffuser: PC

#### DECORATION

Range of colors

#### CRI

≥ 80 Ra

#### RATED VOLTAGE

220- 240V ~ 50/60Hz

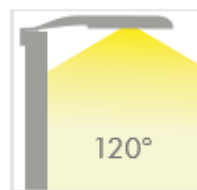
#### INSULATION

II

#### ENVIRONMENTAL IMPACT

Low

#### LIGHT BEAM



#### ILLUMINANCE



# ANDREA

Bathroom Light

- Optimum lighting quality in the mirror.
- **Alternating Current LED** technology.
- NO External driver.
- NO LED spares.

271 mm | **5 W** | 500 lm



**WHITE LIGHT**  
5700 K







#### INSTALLATION SURFACES

- Cabinet
- Wooden frame
- Mirror

#### CRI

≥ 80 Ra

#### RATED VOLTAGE

220- 240V ~ 50/60Hz

#### MATERIALS

- Body: Iron and PC
- Diffuser: PC

#### INSULATION

II

#### DECORATION

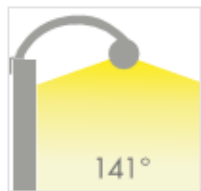
Bronze

#### ENVIRONMENTAL

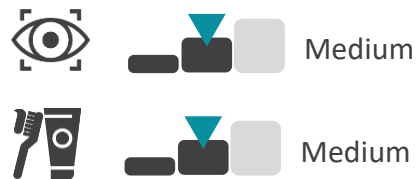
#### IMPACT

Low

#### LIGHT BEAM



#### ILLUMINANCE





# NEILA

Bathroom Light

- 
- Optimum lighting quality in the mirror.
  - **Alternating Current LED** technology.
  - NO External driver.
  - NO LED spares.
- 

300 mm | **8 W** | 554 lm

500 mm | **10 W** | 794 lm

800 mm | **15 W** | 1085 lm

1000 mm | **15 W** | 1147 lm

---



**NATURAL LIGHT**  
4000 K





#### INSTALLATION SURFACES

- Cabinet
- Wooden frame
- Mirror

#### MATERIALS

- Body: Aluminium + ABS
- Diffuser: PC

#### DECORATION

Chrome

#### CRI

≥ 80 Ra

#### RATED VOLTAGE

220- 240V ~ 50/60Hz

#### INSULATION

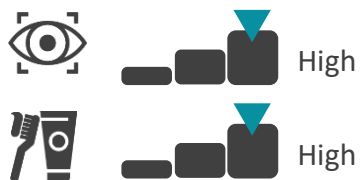
II

#### ENVIRONMENTAL

IMPACT

Low

#### ILLUMINANCE



ideal for  
precision  
tasks





# SABRINA

Bathroom Light

- Designed for small bathrooms or to be installed in pairs.
- Optimum lighting quality in the mirror.
- **Alternating Current LED** technology.
- NO External driver.
- NO LED spares.

347 mm  $\varnothing$  | **3 W** | 140 lm



**NATURAL LIGHT**  
4000 K







#### INSTALLATION SURFACES

- Wooden frame
- Mirror

#### MATERIALS

- Body: ABS
- Diffuser: PC

#### DECORATION

Chrome

#### CRI

≥ 80 Ra

#### RATED VOLTAGE

220- 240V ~ 50/60Hz

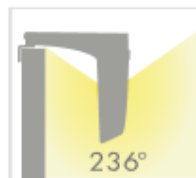
#### INSULATION

II

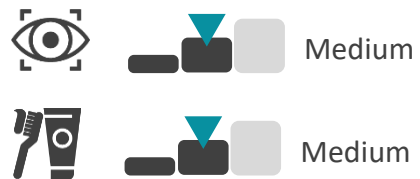
#### ENVIRONMENTAL IMPACT

Low

#### LIGHT BEAM



#### ILLUMINANCE



# EVA

Bathroom Light

- Optimum lighting quality in the mirror.
- **Alternating Current LED** technology.
- NO External driver.
- NO LED spares.

233 mm | **6 W** | 392 lm



**NATURAL LIGHT**  
4000 K





#### INSTALLATION SURFACES

- Cabinet
- Wooden frame
- Mirror

#### MATERIALS

- Body: ABS
- Diffuser: PC

#### DECORATION

Chrome

#### CRI

≥ 80 Ra

#### RATED VOLTAGE

220- 240V ~ 50/60Hz

#### INSULATION

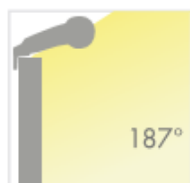
II

#### ENVIRONMENTAL

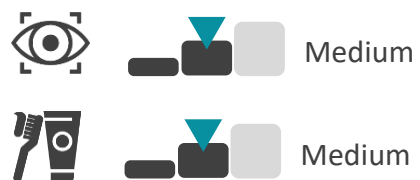
#### IMPACT

Low

#### LIGHT BEAM



#### ILLUMINANCE





# CANDELA

Bathroom Light

- **Great combination of classic design and cutting-edge technology**
- Optimum lighting quality in the mirror.
- **Alternating Current LED** technology.
- NO External driver.
- NO LED spares.

83 mm  $\varnothing$  | 4 W | 225 lm



**NATURAL LIGHT**  
4000 K







#### INSTALLATION SURFACES

- Wooden frame
- Mirror

#### MATERIALS

- Body: Zamak
- Diffuser: PC

#### DECORATION

Bronze

#### CRI

≥ 80 Ra

#### RATED VOLTAGE

220- 240V ~ 50/60Hz

#### INSULATION

II

#### ENVIRONMENTAL IMPACT

Low

#### ILLUMINANCE



Medium



Medium



# SARAY

Bathroom Light

- Optimum lighting quality in the mirror.
- **Alternating Current LED** technology.
- NO External driver.
- NO LED spares.

250 mm | **5 W** | 335 lm



**NATURAL LIGHT**  
4000 K





#### INSTALLATION SURFACES

- Cabinet
- Wooden frame
- Mirror

#### MATERIALS

- Body: ABS
- Diffuser: PC

#### DECORATION

Chrome

#### CRI

≥ 80 Ra

#### RATED VOLTAGE

220- 240V ~ 50/60Hz

#### INSULATION

II

#### ENVIRONMENTAL

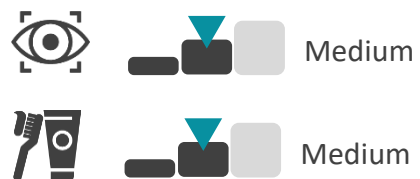
#### IMPACT

Low

#### LIGHT BEAM



#### ILLUMINANCE



# ARIADNA

Bathroom Light

- 
- Optimum lighting quality in the mirror.
  - **Alternating Current LED** technology.
  - NO External driver.
  - NO LED spares.
- 

253 mm | **5 W** | 260 lm

---



**WHITE LIGHT**  
5700 K







#### INSTALLATION SURFACES

- Cabinet
- Wooden frame
- Mirror

#### MATERIALS

- Body: Steel, ABS
- Diffuser: PC

#### DECORATION

Chrome

#### CRI

≥ 80 Ra

#### RATED VOLTAGE

220- 240V ~ 50/60Hz

#### INSULATION

II

#### ENVIRONMENTAL

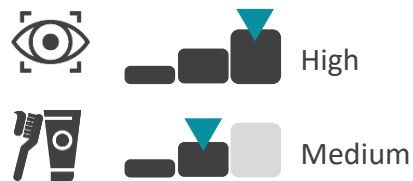
IMPACT

Low

#### LIGHT BEAM



#### ILLUMINANCE



THANKS ;)







2019